

# TAS TRAINING

## TREASURY

MCG, Department of Finance

# Agenda

---

## Part 1

- Learning objectives
- Icebreaker
- What's the Same: Overall Process & Data
- What's New – Day in the life
- Error Handling

[break]

## Part 2

- System Demo
- Hands on practice

# Part 1 - Content

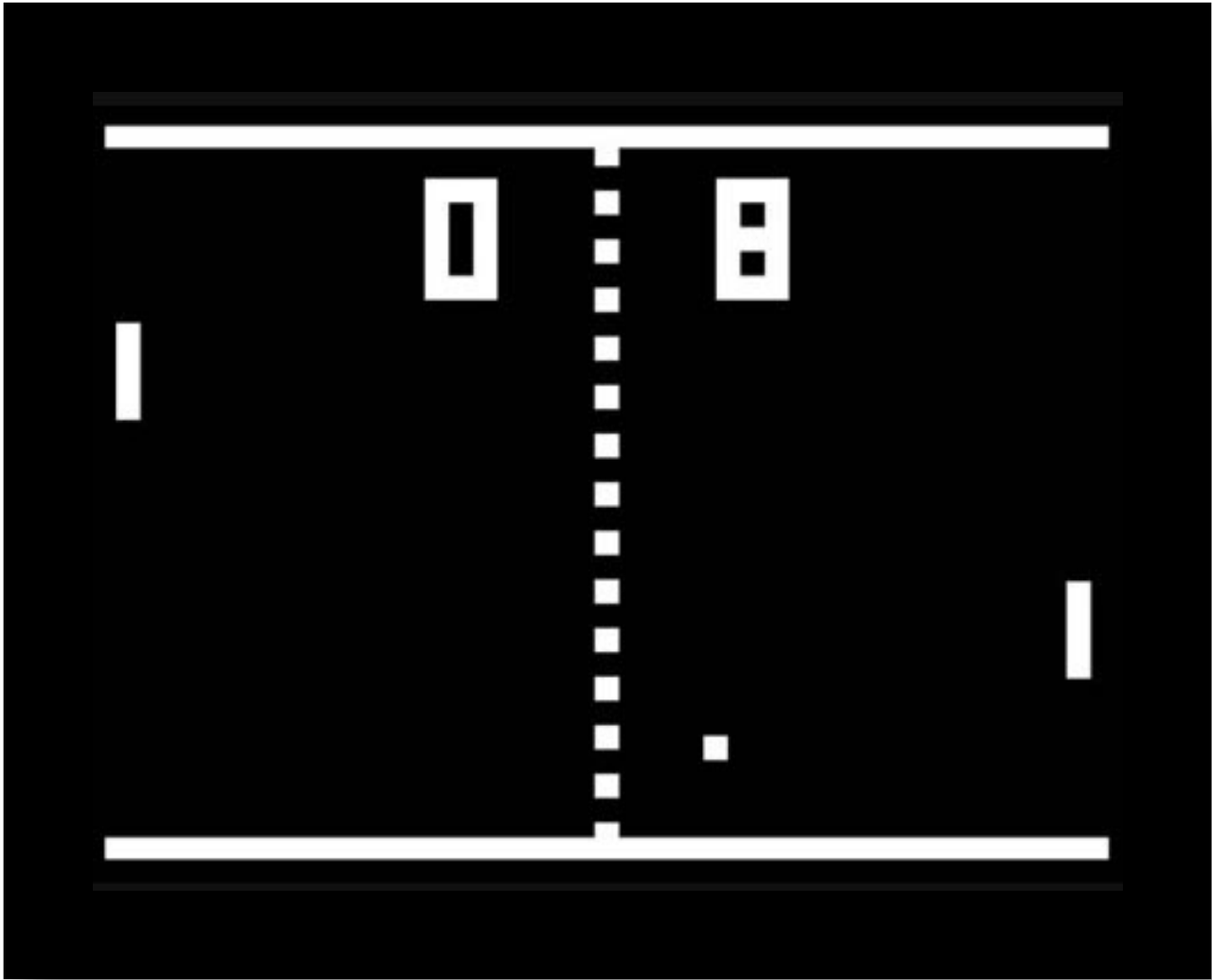
Presented by Diane Bloom & Skyler Grubbs

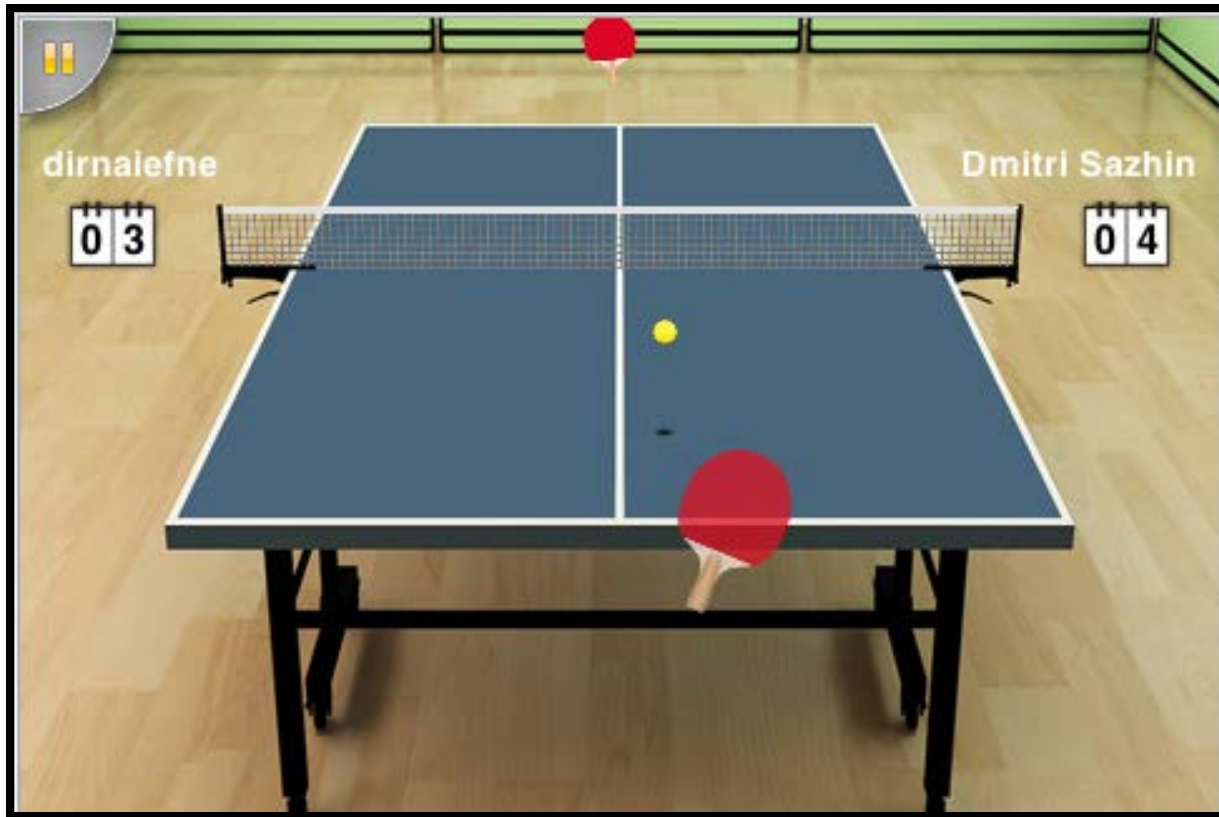
# Goals for Today's Session

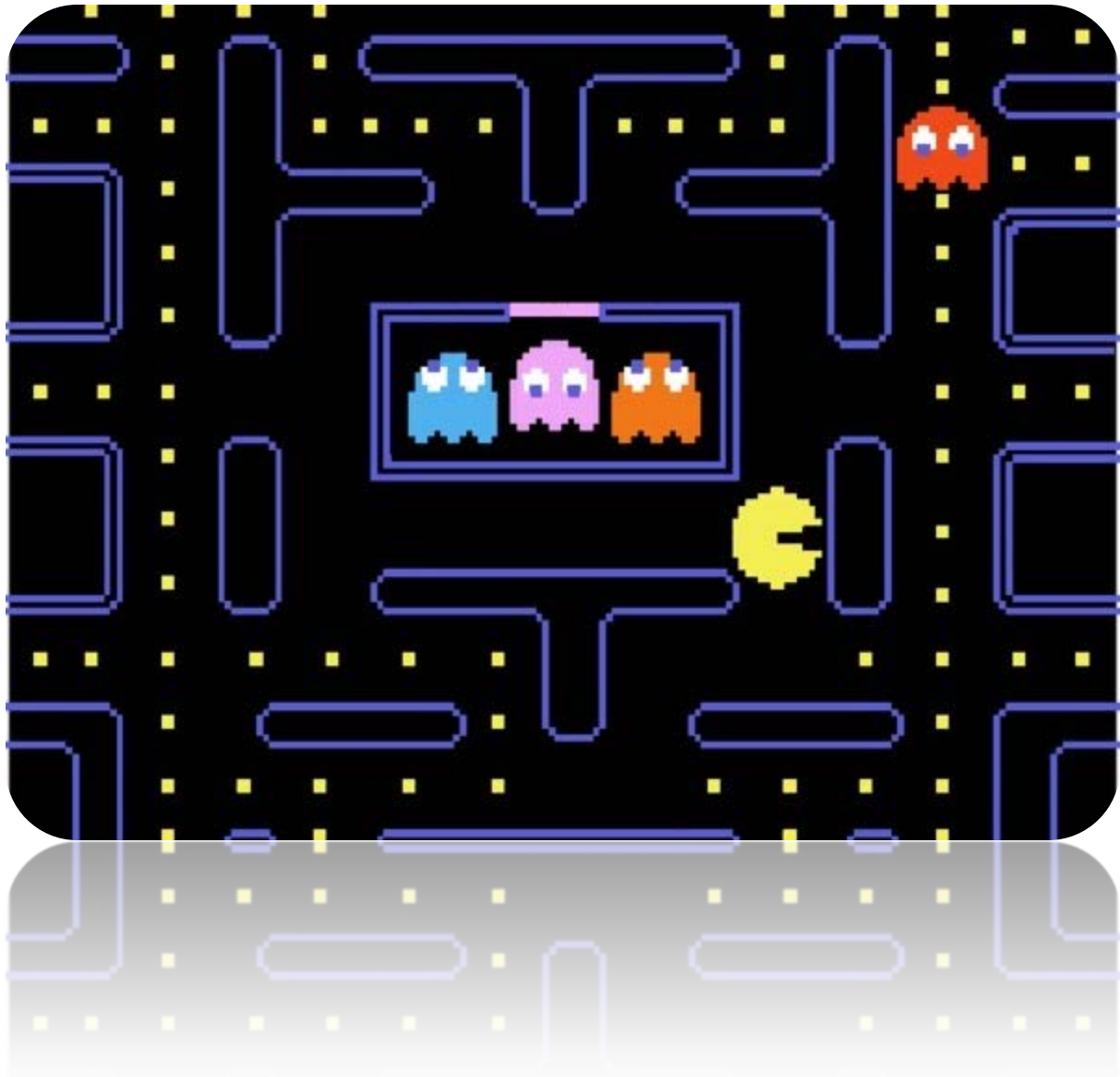
- **Global understanding of end to end process**
- **Understanding your role as a Treasury TAS user**
- **Learning how to perform functions in TAS**
- **Understanding business and system processes as it relates to TAS**
- **Knowing your resources**

# Intro & Ice Breaker

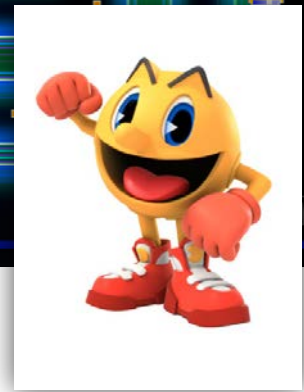
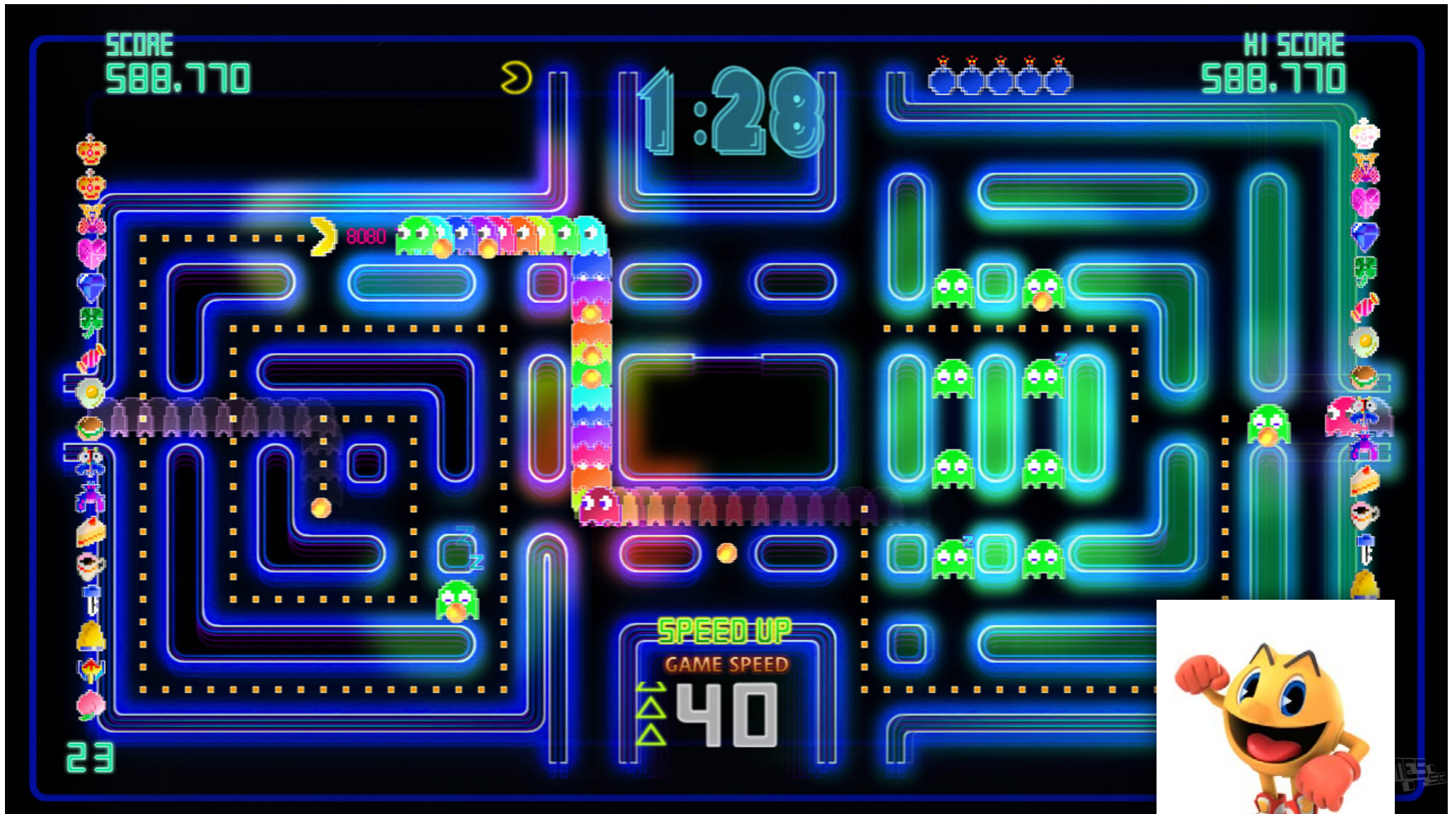


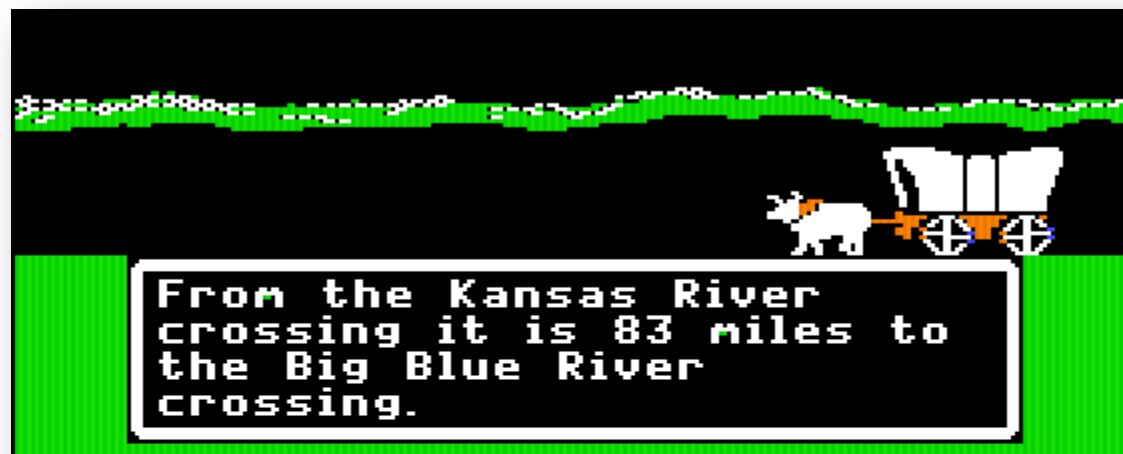












Date: April 8, 1848  
Weather: cool  
Health: good  
Food: 1130 pounds  
Next landmark: 83 miles  
Miles traveled: 102 miles  
Press SPACE BAR to





# Why a new TAS?

## Legacy Transaction Menu

1--> NAME/ADDRESS MAINTENANCE

2--> GENERAL INQUIRY

To operate the demonstration as a legacy application, do the following:

- 1). Select option 1.
- 2). Respond to customer number prompt
- 3). View the customer name/address di
- 4). Press PF3 to return to this menu.
- 5). Select option 2.
- 6). Respond to customer number prompt
- 7). View the customer detail display.
- 8). Press PF3 to return to this menu.
- 9). Press PF3 again to return to the

Enter Option ==> █

From this ... to this!



Home Page

[MCG TAX Assessment System Overview](#)

MCG TAX Assessment System Overview

- coming soon

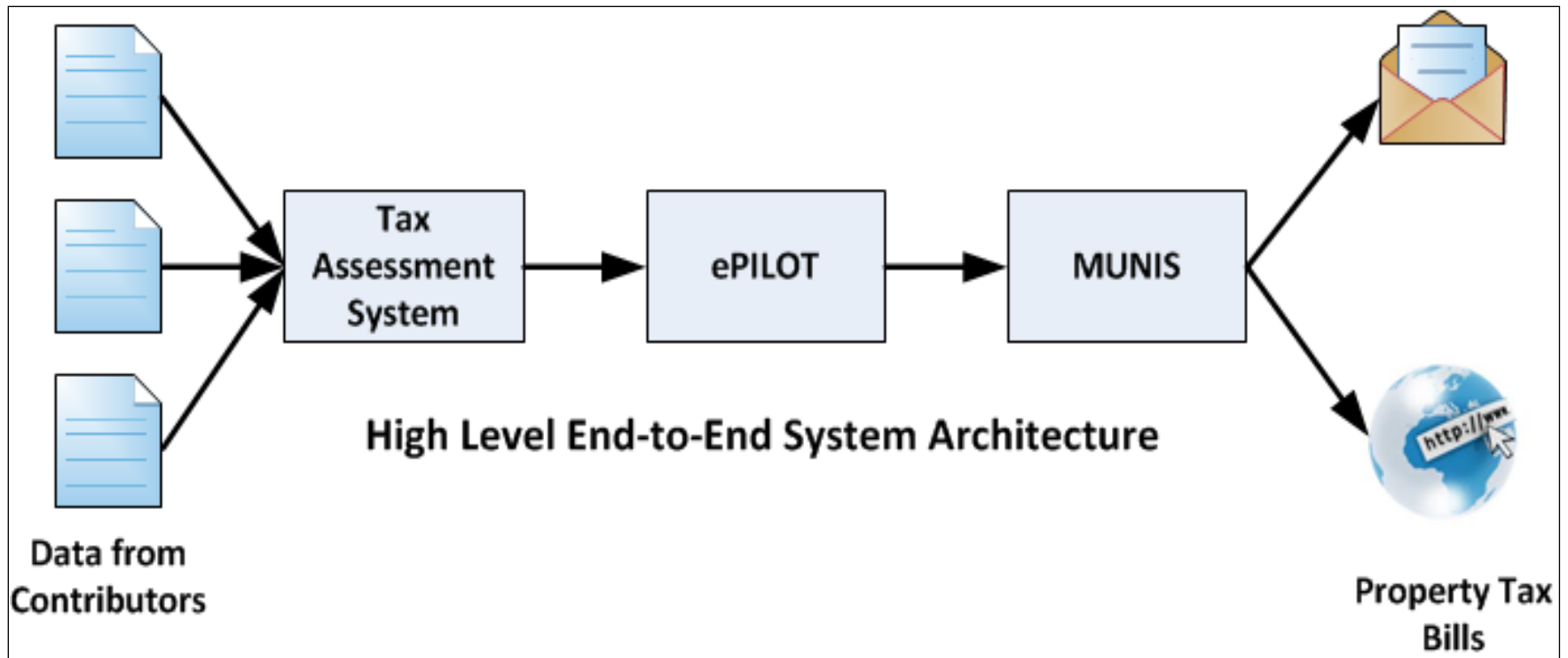
[Batch Job Overview](#)

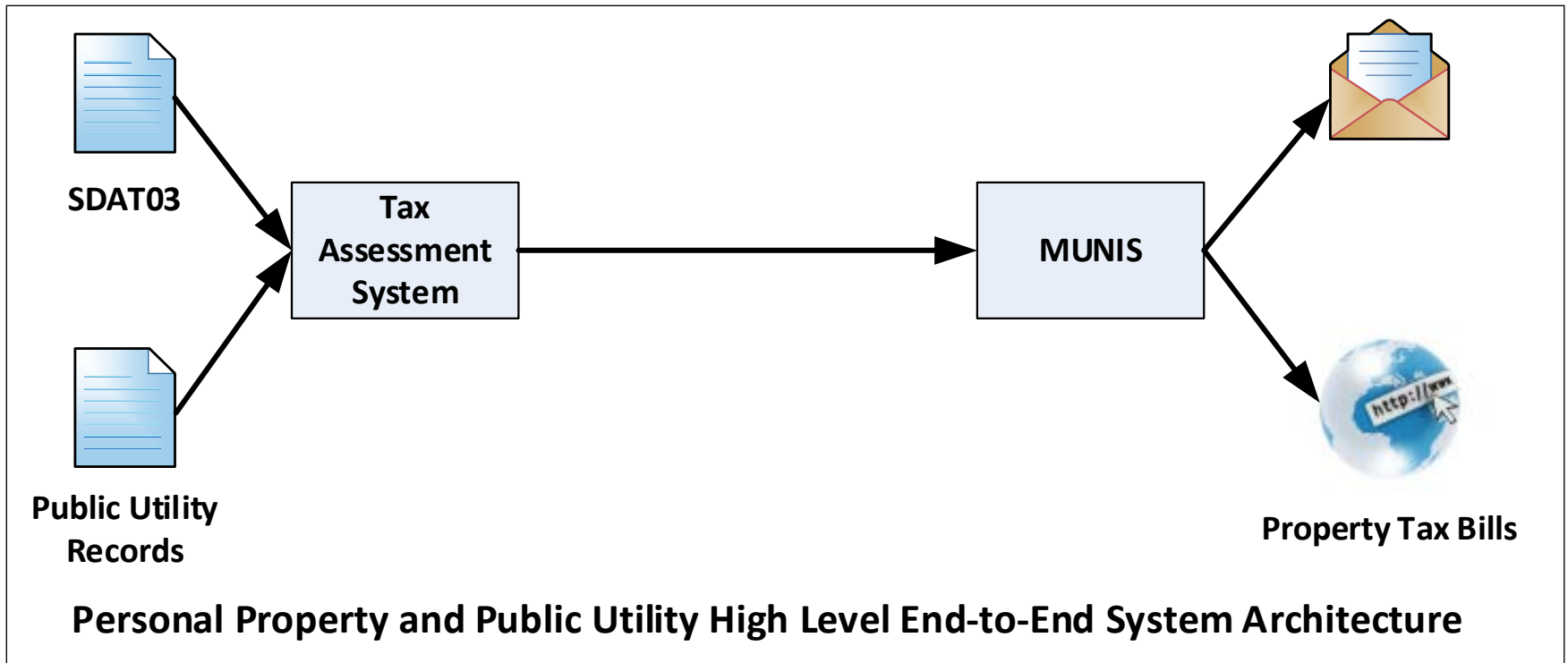
[Agency Contact Information](#)

Privacy Policy | User Rights | Accessibility | Disclaimer  
Copyright 2002-2014 Montgomery County Government All Rights Reserved  
Best viewed with IE 7.0 and higher



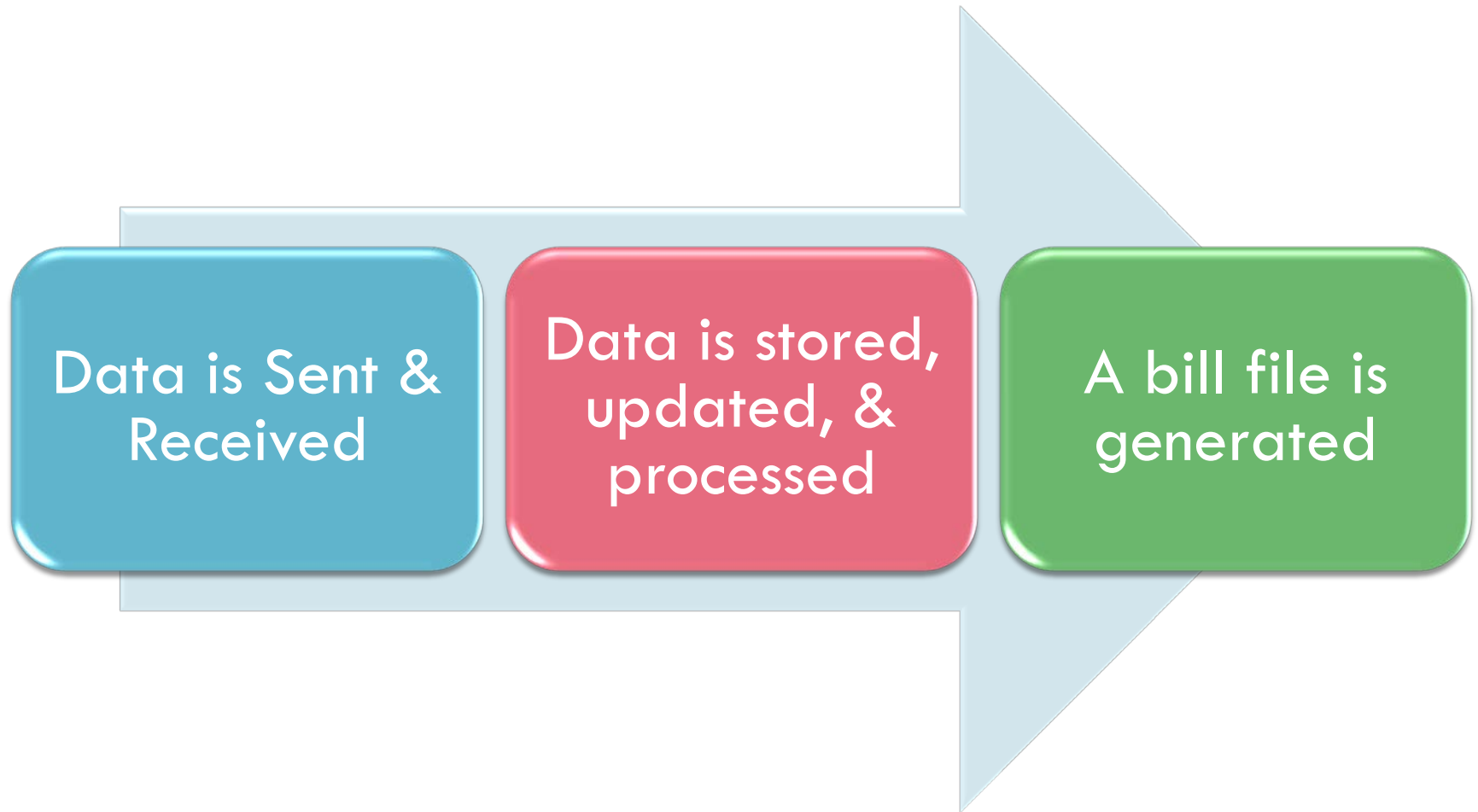
# What's the overall process?





# What's the overall process?

---



# Let's talk data

## STATE OF MD

**SDAT01 – Full State File**

**SDAT02 – Home Owner Credit**

**SDAT03 – Personal Property**

**SDAT04 – New Construction**

- **DEP Storm Water**
- **DEP Solid Waste**
- **WSSC**
- **Public Utility**
- **Rockville Charges**
- **Rockville Storm Water**
- **Gaithersburg Storm Water**
- **Takoma Park**
- **Mortgage Lenders**



# Let's talk data

We send subsets of data called **extracts** to some contributors  
In some cases this is done by ESB. In others, FIN-IT handles.

Refer extract issues to FIN-IT



Send FIN-IT Issues To

[#FIN.TAS@montgomerycountymd.gov](mailto:#FIN.TAS@montgomerycountymd.gov)



Day in the life



**It's April.**

**TAS is live.**

**You're at your desk...**

# What happens in April?



**SDAT Files**  
**Public Utility**  
**Monthly Revised**

*How is the data sent?*

*How do we know when to expect it?*

*How do we know data has arrived?*

*What do we do then?*

*What about issues?*

# How is the data sent?



**New Term: ESB**

**Enterprise Service Bus**



*There are more specifics about how ESB delivers data in your guide. We'll review general information since FIN-IT will manage these issues*

# How is the data sent?

ESB gets it from them  
(network or database)

Like a scheduled pick up



They use county e-mail  
Like traditional snail mail



They drop it to our network  
Like a USPS drop box



*Contributors now have required  
naming conventions & file formats*

# How do we know it's arriving?

## MONTHLY

SDAT01 – First business day of the month

SDAT02 – First & third week of the month

SDAT03 – First & third week of the month

Public Utility & others (ad hoc) – GUI entries

## QUARTERLY

SDAT04 & WSSC

Usually October, January & April

In June, it is processed but billing is combined with annual



*Treasury will be responsible to check for data and manage this schedule (Previously Fin IT)*

# How do we know it has arrived?

To: #DTS.ESBTech; #FIN.SDAT01 Input Success  
Cc:  
Subject: TESTING: ESB Action Completed for SDAT01 to TAS

ESB Event Message Details for service: SDAT01toTAS

-----  
Transfer Date = Tue Dec 31 16:21:57 EST 2013

MULE\_ENCODING = UTF-8  
originalFilename = RLFILE16.zip

ESB Server: MCG-B281.mcgov.org

From: #DTS.ESBTech [DTS.ESBTech@montgomerycountymd.gov]  
To: #DTS.ESBTech; #FIN.SDAT02 Input Failure  
Cc:  
Subject: TESTING: ERROR: ESB Action Failed for SDAT02 to TAS

ESB Event Message Details for service: SDAT02toTAS

-----  
Transfer Date = Tue Dec 31 15:49:25 EST 2013

MULE\_ENCODING = UTF-8  
originalFilename = 20131226.htc.txt

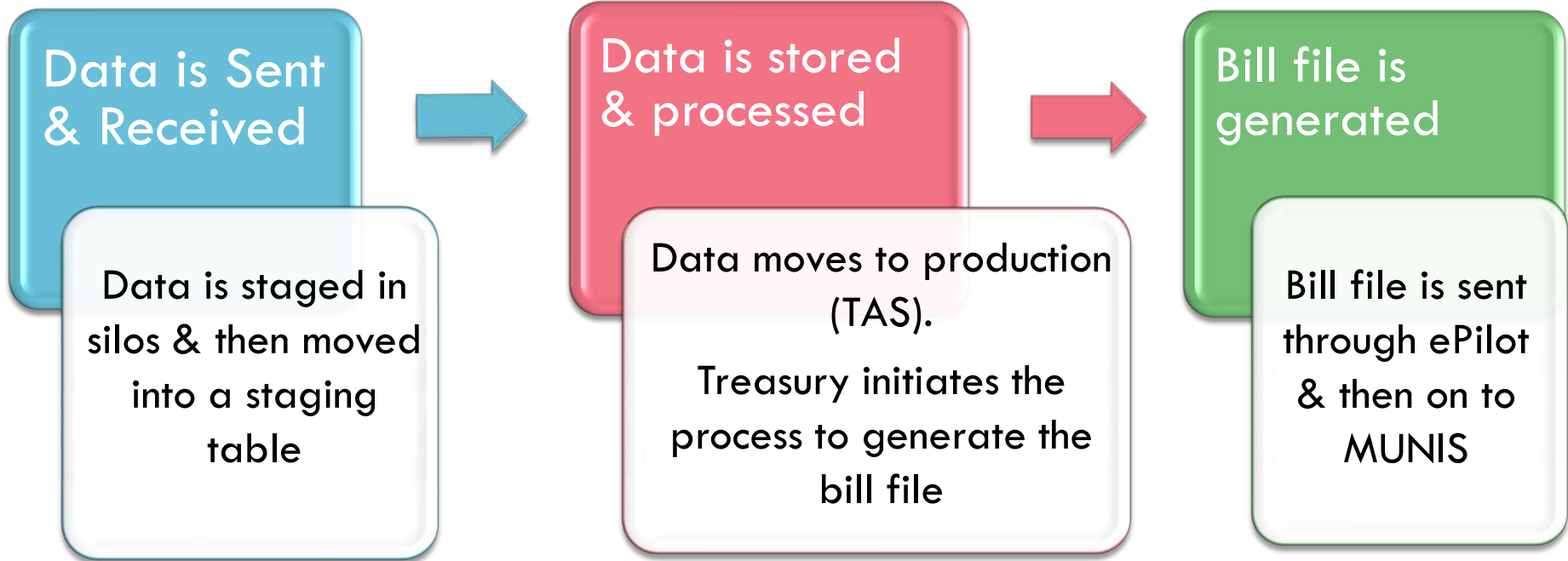
EXCEPTION DETAILS

-----  
There are data errors in the file. Please correct and resubmit.

ESB Server: MCG-B281.mcgov.org



# What do we do now?





# What do we do now?

## July 1 (2013) Process

SDAT01 & SDAT02 update

**Since this process has occurred, changes are now occurring through the GUI...**

Public Utility & others (ad hoc) – GUI entries

Subsequent (New Cons) SDAT04 &  
SDAT03 (Personal Property) – Not GUI Driven

# What about issues?

## Travel Issue (did not arrive)

- ❑ Was it sent?
- ❑ Should it be here?
- ❑ If so, how?
- ❑ Is there an error notification?
- ❑ Dashboard? \*Annual Only

## Data Issue

- ❑ Check which method applies
- ❑ Determine if it's a show stopper

*\*This may vary depending on billing cycle & time*



*The #1 Rule:*

*Contributors are  
responsible for data!*

*Based on the data set,  
we'll take*

*All or Nothing*

*- Or -*

*All We Can Get*

# Part 2 – Demo & Lab

System Demo – Andrew Akinola

Exercises in TAS – Ying Li

# Recap

Did we meet the goals we set?

What questions do you still have?

What's next?

What are your resources moving forward?

- Guides

- 2828